

ORO. APLICACIÓN DE PVD

Physical Vapor Deposition. PVD

El Pvd es uno de los campos de la aplicación de la nanotecnología. El proceso consiste en depositar capas de átomos, en una cámara de alto vacío, sobre una superficie sólida. El recubrimiento se produce por la condensación de un metal vaporizado, oro, titanio, platino, etc. sobre el material a recubrir.

Ventajas:

Alta resistencia al rayado y a la abrasión. Mucho mayor que los metales aplicados por cocción. Excelente dureza superficial. Proceso utilizado en el recubrimiento de herramientas utilizadas en trabajos de fricción.

Resistente a productos químicos, disolventes y productos de limpieza de uso doméstico.

Resistente a la corrosión. ISO 9227



GOLD. PVD APPLICATION.

Physical Vapor Deposition (PVD)

Pvd is a field in the application of nanotechnology. The process consists of depositing layers of atoms, inside a vacuum chamber, to a solid surface. The layering is produced by the condensation of a vaporized metal (such as gold, titanium, platinum etc.) over the selected surface.

Advantages:

High resistance to abrasion and scratches; much higher than metals applied by firing.

Excellent superficial strength. This process is applied in the manufacturing of tools destined to friction related applications.

Resistant to chemical products, dissolvents and domestic cleaning products.

Corrosion resistant. ISO 9227



Золото. Применение PVD

Physical Vapour Deposition — это обработка твердой поверхности в вакуумной среде путём воздействия на неё молекулами других металлов для получения особо прочной и твердой поверхности изделия. Для процесса PVD-обработки в основном используются титан, золото, платина и т.д. Эта технология используется в производстве Швейцарских часов, дорогих светильников и других продуктах

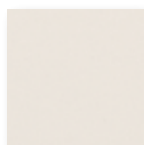
Преимущества:

Покрyтие PVD чрезвычайно плотно, не содержит микротрещин, устойчиво к истиранию и появлению царапин, значительно прочнее покрытий нанесенных другими методами. PVD-слой не поддается воздействию окружающей среды, стойкий к химическим продуктам, растворителям и моющим средствам.

Не поддается коррозии. ISO 9227



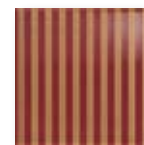
Poeme Oro Trace 20x20 C-320



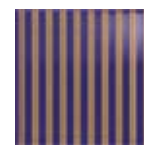
Poeme Marfil 20x20 C-410



Poeme Beige Trace 20x20 C-430



Poeme Burdeos Trace 20x20 C-430



Poeme Azul Trace 20x20 C-430



Poeme Oro Ornato 20x20 C-320



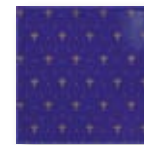
Poeme Marfil Cenefa 10x20 C-200



Poeme Beige Ornato 20x20 C-430



Poeme Burdeos Ornato 20x20 C-430



Poeme Azul Ornato 20x20 C-430



Poeme Oro Lista 2x20 C-120



Poeme Marfil Zócalo 15x20 C-130



Poeme Beige Lista 2x20 C-10



Poeme Burdeos Lista 2x20 C-10



Poeme Azul Lista 2x20 C-10



Poeme Oro Bordura 5x20 C-210



Poeme Marfil Zócalo 15x20 C-130



Poeme Beige Bordura 5x20 C-190



Poeme Burdeos Bordura 5x20 C-190



Poeme Azul Bordura 5x20 C-190



Poeme Oro Ángulo 3x5 C-210



Poeme Marfil Zócalo 15x20 C-130



Poeme Beige Ángulo 3x5 C-190



Poeme Burdeos Ángulo 3x5 C-190



Poeme Azul Ángulo 3x5 C-190



Nera Oro Lista 0,6 x 25 C-230



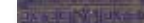
Poeme Marfil Zócalo 15x20 C-130



Poesie Beige Cenefa 5x20 C-240



Poesie Burdeos Cenefa 5x20 C-240

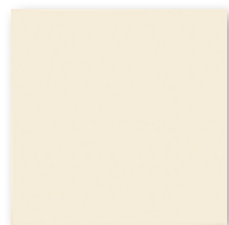


Poesie Azul Cenefa 5x20 C-240

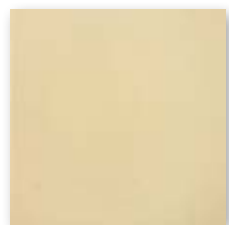
pavimento coordinado matching floor tiles

| 31,6x31,6

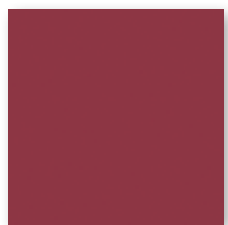
| 12.4"x12.4"



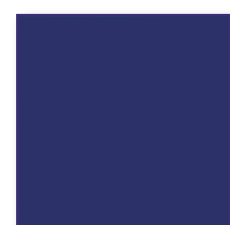
Sincro Beige PEI-IV 31,6x31,6 C-880



Sincro Crema PEI-IV 31,6x31,6 C-880



Sincro Amarante PEI-IV 31,6x31,6 C-900



Sincro Atlántico PEI-III 31,6 x 31,6 C-880

Packing List p.329

Series	Format	Unit	Boxes Pallet	m² Pallet	m² Box	Pieces Box	Kg Pallet	Kg Box
Poeme	20x20	m²	100	100	1	25	1279	12,651
Poeme Ornato / Poeme Trace	20X20	m²	100	100,00	1,00	25	1279	12,65
Poeme Lista	2X20	PZ	64	...	0,24	60	345	5,18
Poeme Bordura	5X20	PZ	48	...	0,36	36	288	5,71
Poeme Ángulo	5X3	PZ	240	...	0,11	75	229	0,90
Poeme Zócalo	15X20	PZ	32	...	0,51	17	225	6,60
Poeme Cenefa	10X20	PZ	48	...	0,50	25	340	6,79
Sincro	31,6x31,6	m²	62	62,00	1,00	10	1140	18,17

e-Ceramica

Contact us for wholesale prices or cooperation:

Zoran Milić

E-mail: info@e-ceramica.com

Mobile : + 386 41 684 696

Telephone : + 386 2 780 54 90

Fax : + 386 2 779 76 61

Merilly d.o.o. ; Vodnikova ulica 2 ; Si 2250 Ptuj ; Slovenia ;EU

Web : ·Americas

[Ceramic tiles in Argentina](#)
[Ceramic tiles in Bahamas](#)
[Ceramic tiles in Bolivia](#)
[Ceramic tiles in Canada](#)
[Ceramic tiles in Chile](#)
[Ceramic tiles in Colombia](#)
[Ceramic tiles in Costa Rica](#)
[Ceramic tiles in Cuba](#)
[Ceramic tiles in Ecuador](#)
[Ceramic tiles in El Salvador](#)
[Ceramic tiles in Guatemala](#)
[Ceramic tiles in Honduras](#)
[Ceramic tiles in Jamaica](#)
[Ceramic tiles in México](#)
[Ceramic tiles in Nicaragua](#)
[Ceramic tiles in Panamá](#)
[Ceramic tiles in Paraguay](#)
[Ceramic tiles in Perú](#)
[Ceramics in Re. Dominicana](#)
[Ceramics in Trin. & Tobago](#)
[Ceramic tiles in Uruguay](#)
[Ceramic tiles in USA](#)
[Ceramic tiles in Venezuela](#)

· Europe

[Ceramic tiles in BIH](#)
[Ceramic tiles in Crna Gora](#)
[Ceramic tiles in España](#)
[Ceramic tiles in France](#)
[Ceramic tiles in Germany](#)
[Ceramic tiles in Hrvatska](#)
[Ceramic tiles in Ireland](#)
[Ceramic tiles in Kosove](#)
[Ceramic tiles in Liechtenstein](#)
[Ceramic tiles in Magyarország](#)
[Ceramic tiles in Македонија](#)
[Ceramic tiles in Maqedoni](#)
[Ceramic tiles in Malta](#)
[Ceramic tiles in Österreich](#)
[Ceramic tiles in Russia](#)
[Ceramic tiles in Schweiz](#)
[Ceramic tiles in Suisse](#)
[Ceramic tiles in Shqiperi](#)
[Ceramic tiles in Slovenija](#)
[Ceramic tiles in Србија](#)
[Ceramics in United Kingdom](#)

· Asia

[Ceramic tiles in India](#)
[Ceramic tiles in Pakistan](#)
[Ceramic tiles in Philippines](#)
[Ceramic tiles in Singapore](#)
[Ceramic tiles in Turkiye](#)

· Africa & Australia

[Ceramic tiles in Australia](#)
[Ceramic tiles in Cameroon](#)
[Ceramic tiles in Ghana](#)
[Ceramics in Guinea Ecuatorial](#)
[Ceramic tiles in Swaziland](#)
[Ceramic tiles in New Zealand](#)
[Ceramic tiles in Nigeria](#)