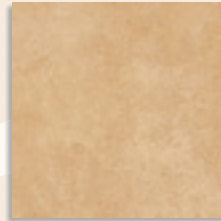


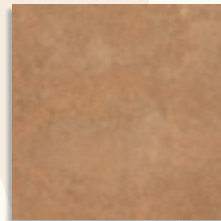
30x30 cm. 11.8x11.8 inches



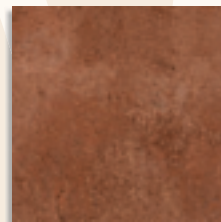
Parador



Alarcón Paja G.120 *Antideslizante G.120*



Alarcón Barro G.120 *Antideslizante G.120*



Alarcón Cuero G.120 *Antideslizante G.120*



(1) **ANTIDESLIZANTE.** Con el fin de dar una mayor seguridad en aquellas áreas transitables, cuyas condiciones de humedad y pendientes son mayores de lo habitual. Esta serie supera las pruebas de ensayo según la Norma UNE-ENV 12633:2003. Para más información, consultar nuestro departamento técnico.

SLIP RESISTANCE. The aim here is to provide better safety in areas of pedestrian traffic, where the humidity conditions and slopes are greater than normal. This series rates higher than the test results recommended by Regulation UNE-ENV 12633:2003. For more information on this, contact our Technical Department.



CL 3
R 10

Formato / Size	X Caja / Box			X Palet / Pallet		
	Pz / Pc	M2 / sqm	Kg	Cj / Box	M2 / sqm	Kg
30x30 cm.	13	1,17	18,61	64	74,88	1191,04

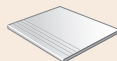
Formato / Size		X Caja / Box			X Palet / Pallet		
		Pz / Pc	ML	Kg	Cj / Box	ML	Kg
9,4x30 cm.	rodapié	45	13,50	27,66	64	864	1770,24
30x30 cm.	peldaño / ángulo	13	3,90	18,61	64	249,60	1191,04
30x30 cm.	gradone	4	1,20	7,40	-	-	-
30x30 cm.	ángulo gradone	4	1,20	9,20	-	-	-

(1) En acabado antideslizante, por sus características técnicas, presenta una ligera variación de tono y textura. Slip resistance finishing, due to its technical characteristics, it presents a light hue and texture variation.

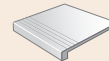
rodapié cortado y biselado
cut and bevelled skirting tile
9,4x30 cm. / 3.7x11.8 inches
Alarcón
G.40



peldaño
staircase step
30x30 cm. / 11.8x11.8 inches
Alarcón
G.56



gradone
30x30 cm. / 11.8x11.8 inches
Alarcón
G.80



El peldaño y el gradone pueden servirse con o sin rayado de hendidura. También disponibles en ángulo.

The staircase step and gradone can be sold with or without the ribbed notch. Angle is also available.

e-Ceramica

Contact us for wholesale prices or cooperation:

Zoran Milić

E-mail: info@e-ceramica.com

Mobile : + 386 41 684 696

Telephone : + 386 2 780 54 90

Fax : + 386 2 779 76 61

Merilly d.o.o. ; Vodnikova ulica 2 ; Si 2250 Ptuj ; Slovenia

Web :

• Americas

[Ceramic tiles in Argentina](#)
[Ceramic tiles in Bahamas](#)
[Ceramic tiles in Bolivia](#)
[Ceramic tiles in Canada](#)
[Ceramic tiles in Chile](#)
[Ceramic tiles in Colombia](#)
[Ceramic tiles in Costa Rica](#)
[Ceramic tiles in Cuba](#)
[Ceramic tiles in Ecuador](#)
[Ceramic tiles in El Salvador](#)
[Ceramic tiles in Guatemala](#)
[Ceramic tiles in Honduras](#)
[Ceramic tiles in Jamaica](#)
[Ceramic tiles in México](#)
[Ceramic tiles in Nicaragua](#)
[Ceramic tiles in Panamá](#)
[Ceramic tiles in Paraguay](#)
[Ceramic tiles in Perú](#)
[Ceramics in Re. Dominicana](#)
[Ceramics in Trin. & Tobago](#)
[Ceramic tiles in Uruguay](#)
[Ceramic tiles in USA](#)
[Ceramic tiles in Venezuela](#)

• Europe

[Ceramic tiles in BiH](#)
[Ceramic tiles in Crna Gora](#)
[Ceramic tiles in España](#)
[Ceramic tiles in France](#)
[Ceramic tiles in Germany](#)
[Ceramic tiles in Hrvatska](#)
[Ceramic tiles in Ireland](#)
[Ceramic tiles in Kosove](#)
[Ceramic tiles in Liechtenstein](#)
[Ceramic tiles in Magyarország](#)
[Ceramic tiles in Македонија](#)
[Ceramic tiles in Magedoni](#)
[Ceramic tiles in Malta](#)
[Ceramic tiles in Österreich](#)
[Ceramic tiles in Russia](#)
[Ceramic tiles in Schweiz](#)
[Ceramic tiles in Suisse](#)
[Ceramic tiles in Shqiperi](#)
[Ceramic tiles in Slovenija](#)
[Ceramic tiles in Србија](#)
[Ceramics in United Kingdom](#)

• Asia

[Ceramic tiles in India](#)
[Ceramic tiles in Pakistan](#)
[Ceramic tiles in Philippines](#)
[Ceramic tiles in Singapore](#)
[Ceramic tiles in Turkiye](#)

• Africa & Australia

[Ceramic tiles in Australia](#)
[Ceramic tiles in Cameroon](#)
[Ceramic tiles in Ghana](#)
[Ceramics in Guinea Ecuatorial](#)
[Ceramic tiles in Swaziland](#)
[Ceramic tiles in New Zealand](#)
[Ceramic tiles in Nigeria](#)