

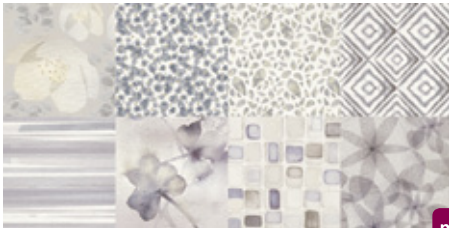
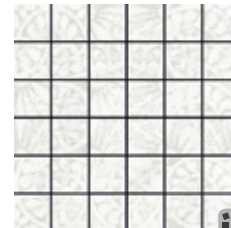
WALL  
WALL TILEST3 - MODERATE  
VARIATION

MATTE

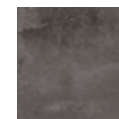
1.04 CM  
29.5x59.2  
30x60

PLASTER

30x60cm / 11.8"x23.6"

**WHITE**29.5x59.2x1.04 cm ret.  
30x60x1.04 cmR840R | C20  
R840 | C11**BEIGE**29.5x59.2x1.04 cm ret.  
30x60x1.04 cmR842R | C20  
R842 | C11**GREY**29.5x59.2x1.04 cm ret.  
30x60x1.04 cmR841R | C20  
R841 | C11**DECOR AQUAPATCH**29.5x59.2x1.04 cm ret.  
30x60x1.04 cmR861R<sup>(A)</sup> | C21  
R861<sup>(A)</sup> | C14**DECOR LACE HEART**29.5x59.2x1.04 cm ret.  
30x60x1.04 cmR854R | C24  
R854 | C16**DECOR FROST** (PIECE)29.5x59.2x1.04 cm ret.  
30x60x1.04 cmD897R | D28  
D897 | D25**DECOR AQUARELLA** (PIECE)29.5x59.2x1.04 cm ret.  
30x60x1.04 cmD896R<sup>(A)</sup> | D27  
D896<sup>(A)</sup> | D24**MOSAIC AQUARELLA**(4.7X4.7 cm) (PIECE)  
29.5x29.5x1.04 cm DC896<sup>(A)</sup> | D27**MOSAIC LACE HEART**(4.7X4.7 cm) (PIECE)  
29.5x29.5x1.04 cm DC854<sup>(A)</sup> | D20**MOSAIC FROST**(4.7X4.7 cm) (PIECE)  
29.5x29.5x1.04 cm DC897<sup>(A)</sup> | D27**FAIXA AQUARELLA** (PIECE)4.7x59.2x1.04 cm  
4.7x60x1.04 cmF896R<sup>(A)</sup> | D12  
F896<sup>(A)</sup> | D11<sup>(A)</sup> RANDOM DRAWING . DESENHO ALEATORIO . DESSIN ALÉATOIRE . WECHSELNDES DESIGN . DISEÑO ALEATORIO . ЖЕРЕБЬЕВКИWALL + FLOOR  
PORCELAIN TILES**FLOOR SUGGESTION**

SUGESTÃO DE PAVIMENTO . SUGGESTION DE CARREAUX DE SOL . DAZU PASSENDE BODENFLIESEN . SUGESTIÓN DE PAVIMENTO . ПРЕДЛОЖЕНИЯ ДЛЯ ПОЛА

**CONCRETE BLEND**  
(14)**CONCRETE SAND**  
(14)**CONCRETE MUD**  
(14)**CONCRETE MASS**  
(14)**CONCRETE FUSE**  
(14)**CONCRETE LAVA**  
(14)**CONCRETE JOIN**  
(14)

SIZES (CM) Dimensão . Format Maße . Formato Размеры	PIECES / BOX Peças / Caixa . Pièces / Boîte Stück / Karton . Piezas / Caja Штук / Коробка	SQM / BOX M <sup>2</sup> / Caixa . M <sup>2</sup> / Boîte M <sup>2</sup> / Karton . M <sup>2</sup> / Caja Кв.м / Коробка	WEIGHT / BOX Peso / Caixa . Poids / Boîte Gewicht / Karton . Peso / Caja Вес / Коробка	BOX / PALLET Caixa / Palete . Boîte / Palette Kartons / Palette . Caja / Pallet Коробок / Поддон	SQM / PALLET M <sup>2</sup> / Paleta . M <sup>2</sup> / Palette M <sup>2</sup> / Palette . M <sup>2</sup> / Pallet Кв.м / Поддон	WEIGHT / PALLET Peso / Paleta . Poids / Palette Gewicht / Palette . Peso / Pallet Вес / Поддон
29.5x59.2x1.04 ret.	7	1.220	21.00	32	39.040	687
30x60x1.04	7	1.280	22.00	32	40.960	724