

# FRESH



**REVESTIMIENTO**  
**Pasta roja**  
 Red body tiles  
 Pâte rouge

**20X60 CM**  
**7,87"X23,62"**

FRESH White	<b>M12</b>	2.670.108.1929
FRESH Cream	<b>M12</b>	2.670.163.1929
FRESH Grey	<b>M12</b>	2.670.161.1929

## Pavimentos coordinados Coordinated Flooring / Sols coordonnées

### FRESH White



FRESH  
 Grey

### FRESH Grey



FRESH  
 Grey

### FRESH Cream



FRESH  
 Crean

### FRESH White



URBANA  
 Marfil

### FRESH Grey



URBANA  
 Gris

### FRESH Cream



URBANA  
 Marfil

Piezas complementarias ver en pag 346  
 Special pieces see page 346  
 Pièces supplémentaires, voir page 346

Formato	pz/cj	m²/cj	cj/pl	m²/pl	kg/cj	kg/pl
20x60	9	1,08	80	86,40	18,25	1486



white



grey



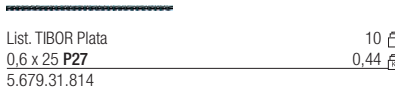
Dec. ALAMO-1 White  
 20 x 60 **P81**  
 5.677.108.2333



Dec. ALAMO-2 White  
 20 x 60 **P81**  
 5.677.108.2334



Dec. ACANTO White  
 20 x 60 **P92**  
 5.677.108.510



List. TIBOR Plata  
 0,6 x 25 **P27**  
 5.679.31.814



cream

Mold. BERYLLIUM BRONZE Mate  
 2 x 60 **P56**  
 5.744.335.2782



Dec. ALAMO-1 Cream  
 20 x 60 **P81**  
 5.677.163.2333



Dec. ALAMO-2 Cream  
 20 x 60 **P81**  
 5.677.163.2334



Dec. ACANTO Cream  
 20 x 60 **P92**  
 5.677.163.510



List. TIBOR Oro  
 0,6 x 25 **P27**  
 5.679.32.814

# FRESH

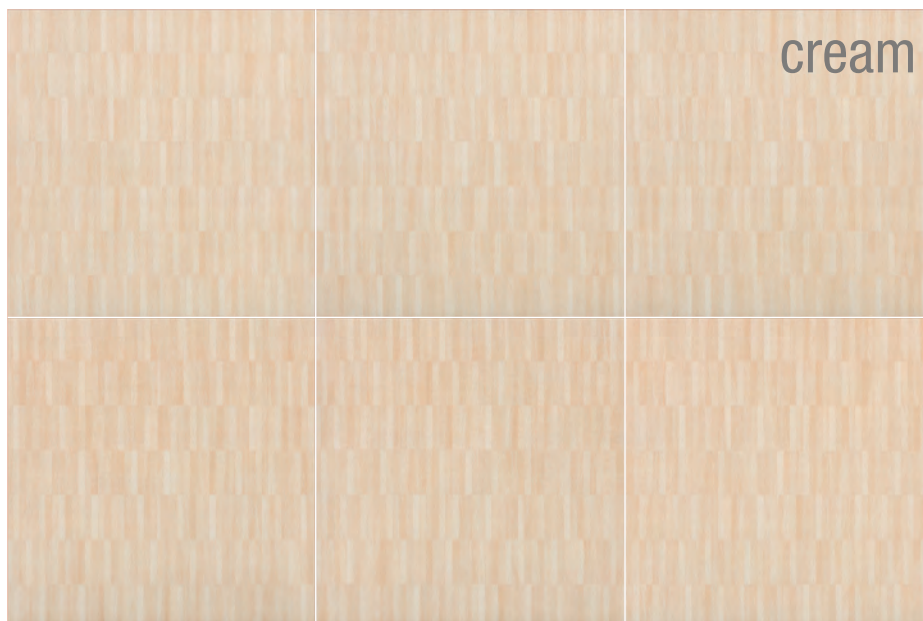


PAVIMENTO  
 Pasta roja  
 Red body tile  
 Pâte rouge

UNE-ENV 12633  
 CLASE 1

45X45 CM  
 17,71"X17,71"

FRESH Cream	M09	1.302.163.1929	PEI 4
FRESH Gold	M09	1.302.189.1929	PEI 4
FRESH Grey	M09	1.302.161.1929	PEI 3



Piezas complementarias ver en pag 346  
 Special pieces see page 346  
 Pièces supplémentaires, voir page 346

Formato	pz/cj	m <sup>2</sup> /cj	cj/pl	m <sup>2</sup> /pl	kg/cj	kg/pl
45x45	7	1,42	52	73,84	26,30	1367