

# PRAGA



REVESTIMIENTO  
 Pasta roja  
 Red body tiles  
 Pâte rouge

20X60 CM  
 7,87"X23,62"

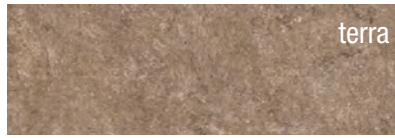
PRAGA Marfil	M12	2.670.33.285
PRAGA Ceniza	M12	2.670.19.285
PRAGA Terra	M12	2.670.56.285
PRAGA Mica	M12	2.670.125.285



marfil



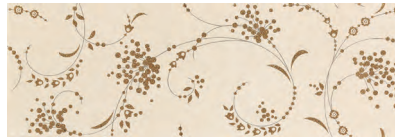
ceniza



terra

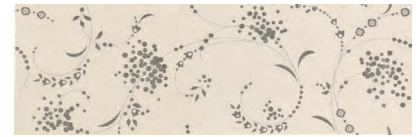


mica



Dec. MIMOSA Oro  
 20 x 60 **P117**  
 5.677.32.2352

4   
 7,40



Dec. MIMOSA Plata  
 20 x 60 **P117**  
 5.677.31.2352

4   
 7,40



List. MIMOSA Oro  
 6 x 60 **P58**  
 5.661.32.2352

12   
 7,38



List. MIMOSA Plata  
 6 x 60 **P58**  
 5.661.31.2352

12   
 7,38

## Pavimentos coordinados Coordinated Flooring / Sols coordonnées

PRAGA Marfil PRAGA Ceniza



PRAGA  
 Marfil



PRAGA  
 Ceniza

PRAGA Marfil PRAGA Ceniza



AVALON  
 Marfil



AVALON  
 Ceniza

PRAGA Terra PRAGA Mica



AVALON  
 Musgo

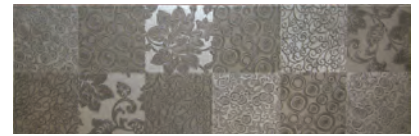


AVALON  
 Ceniza



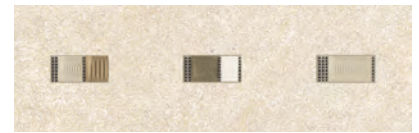
Dec. SAPHIR Terra  
 20 x 60 **P94**  
 5.677.56.2358

4   
 8,10



Dec. SAPHIR Mica  
 20 x 60 **P94**  
 5.677.125.2358

4   
 8,10



Inst. LANY Marfil  
 20 x 60 **P113**  
 5.677.33.2349

4   
 8,00



List. LANY  
 4 x 60 **P69**  
 5.622.1.2349

26   
 11,44



List. LIGNES  
 5 x 60 **P20**  
 5.636.1.2350

13   
 7,50



List. POPPY  
 5 x 60 **P20**  
 5.636.1.2356

13   
 7,38

Piezas complementarias ver en pag 346  
 Special pieces see page 346  
 Pièces supplémentaires, voir page 346

Formato	pz/cj	m <sup>2</sup> /cj	cj/pl	m <sup>2</sup> /pl	kg/cj	kg/pl
20x60	9	1,08	80	86,40	18,25	1486

# PRAGA



PAVIMENTO  
 Pasta roja  
 Red body tile  
 Pâte rouge

UNE-ENV 12633  
 CLASE 1

45X45 CM  
 17,71"X17,71"

PRAGA Marfil **M09** 1.302.33.285 PEI 4  
 PRAGA Ceniza **M09** 1.302.19.285 PEI 4



Cnf. ACRA Marfil 30   
 5 x 30 **P25** 7,50   
 9.423.33.1022  
 (Marmol - Marble)



PVTO / FLOOR / SOL: PRAGA MARFIL 45 x 45 / CNF. ACRA MARFIL 5 x 30



Piezas complementarias ver en pag 346  
 Special pieces see page 346  
 Pièces supplémentaires, voir page 346

Formato	pz/cj	m <sup>2</sup> /cj	cj/pl	m <sup>2</sup> /pl	kg/cj	kg/pl
45x45	7	1,42	52	73,84	26,30	1367