



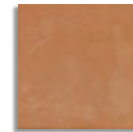
Cotto Camel · Cotto Âmbar

COTTO · ARDÓSIA · TIJOLEIRA · PEDRA 30x30 [ 29,6x29,6x0,9 cm ] LUNAR

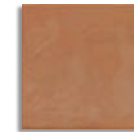
30x30 [ 29,6x29,6x0,8 cm ]



**COTTO CAMEL**  
30x30 NAT  
30x30RECT [29,6x29,6cm] **P70**  
**P83**



**COTTO ÂMBAR**  
30x30 NAT  
30x30RECT [29,6x29,6cm] **P70**  
**P83**



**COTTO TIJOLO**  
30x30 NAT  
30x30RECT [29,6x29,6cm] **P77**  
**P90**



**ARDÓSIA BEGE**  
30x30 NAT  
30x30RECT [29,6x29,6cm] **P65**  
**P78**



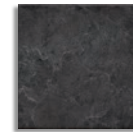
**(4) TIJOLEIRA ÂMBAR**  
30x30 NAT  
30x30RECT [29,6x29,6cm] **P69**  
**P82**



**(4) TIJOLEIRA TERRACOTA**  
30x30 NAT  
30x30RECT [29,6x29,6cm] **P69**  
**P82**



**ARDÓSIA CINZA**  
30x30 NAT  
30x30RECT [29,6x29,6cm] **P65**  
**P78**



**ARDÓSIA PRETO**  
30x30 NAT  
30x30RECT [29,6x29,6cm] **P65**  
**P78**



**LUNAR PRETO**  
30x30RECT [29,6x29,6cm] **P91**



**PEDRA CINZA**  
30x30 NAT  
30x30RECT [29,6x29,6cm] **P66**  
**P79**



**PEDRA PRETO**  
30x30 NAT  
30x30RECT [29,6x29,6cm] **P67**  
**P80**



**LUNAR GRAFITE**  
30x30RECT [29,6x29,6cm] **P91**

(4) ANTIDERRAPANTE: Produtos que minimizam o risco de deslizamento.

(4) ANTISLIP: Products that minimize the risk of slipping.

(4) ANTIDÉRAPANT : Produits qui réduisent le risque de glissement.

(4) RUTSCHHEMMEND: Produkte mit geringer Rutschgefahr.

(4) ANTIDESLIZANTE: Productos que minimizan el riesgo de deslizamiento.



30x30 cm

REC. (M1)

230



9,5x30 cm

REC. (M1)

61



CROSS 8 CROSS 16 LINEA 2 LINEA 4 LINEA 8 SQUARE 4 SQUARE 16 SQUARE 64

REC. (M1)

61

183

revigres  
porcelanato

	NAT / RECT			
COTTO			V2	class. 4
ARDÓSIA			V2	class. 4
TIJOLEIRA			V2	class. 5
PEDRA			V2	class. 5
LUNAR			V2	class. 5

REC. (M1)

225

**e-Ceramica**

**Contact us for wholesale prices or cooperation:**

**Zoran Milić**

**E-mail: [info@e-ceramica.com](mailto:info@e-ceramica.com)**

**Mobile : + 386 41 684 696**

**Telephone : + 386 2 780 54 90**

**Fax : + 386 2 779 76 61**

*Merilly d.o.o. ; Vodnikova ulica 2 ; Si 2250 Ptuj ; Slovenia ; EU*

**Web : · Americas**

[Ceramic tiles in Argentina](#)

[Ceramic tiles in Bahamas](#)

[Ceramic tiles in Bolivia](#)

[Ceramic tiles in Canada](#)

[Ceramic tiles in Chile](#)

[Ceramic tiles in Colombia](#)

[Ceramic tiles in Costa Rica](#)

[Ceramic tiles in Cuba](#)

[Ceramic tiles in Ecuador](#)

[Ceramic tiles in El Salvador](#)

[Ceramic tiles in Guatemala](#)

[Ceramic tiles in Honduras](#)

[Ceramic tiles in Jamaica](#)

[Ceramic tiles in México](#)

[Ceramic tiles in Nicaragua](#)

[Ceramic tiles in Panamá](#)

[Ceramic tiles in Paraguay](#)

[Ceramic tiles in Perú](#)

[Ceramics in Re. Dominicana](#)

[Ceramics in Trin. & Tobago](#)

[Ceramic tiles in Uruguay](#)

[Ceramic tiles in USA](#)

[Ceramic tiles in Venezuela](#)

**· Europe**

[Ceramic tiles in BIH](#)

[Ceramic tiles in Crna Gora](#)

[Ceramic tiles in España](#)

[Ceramic tiles in France](#)

[Ceramic tiles in Germany](#)

[Ceramic tiles in Hrvatska](#)

[Ceramic tiles in Ireland](#)

[Ceramic tiles in Kosove](#)

[Ceramic tiles in Liechtenstein](#)

[Ceramic tiles in Magyarország](#)

[Ceramic tiles in Македонија](#)

[Ceramic tiles in Maqedoni](#)

[Ceramic tiles in Malta](#)

[Ceramic tiles in Österreich](#)

[Ceramic tiles in Russia](#)

[Ceramic tiles in Schweiz](#)

[Ceramic tiles in Suisse](#)

[Ceramic tiles in Shqiperi](#)

[Ceramic tiles in Slovenija](#)

[Ceramic tiles in Србија](#)

[Ceramics in United Kingdom](#)

**· Asia**

[Ceramic tiles in India](#)

[Ceramic tiles in Pakistan](#)

[Ceramic tiles in Philippines](#)

[Ceramic tiles in Singapore](#)

[Ceramic tiles in Turkiye](#)

**· Africa & Australia**

[Ceramic tiles in Australia](#)

[Ceramic tiles in Cameroon](#)

[Ceramic tiles in Ghana](#)

[Ceramics in Guinea Ecuatorial](#)

[Ceramic tiles in Swaziland](#)

[Ceramic tiles in New Zealand](#)

[Ceramic tiles in Nigeria](#)