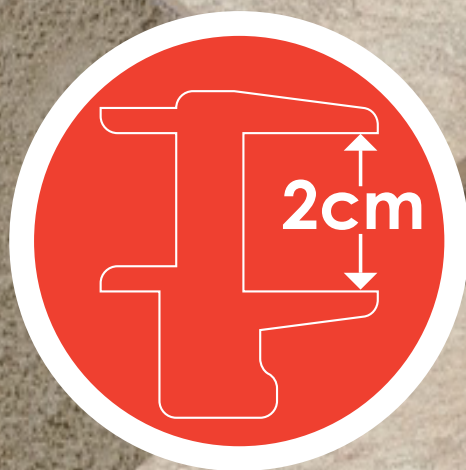
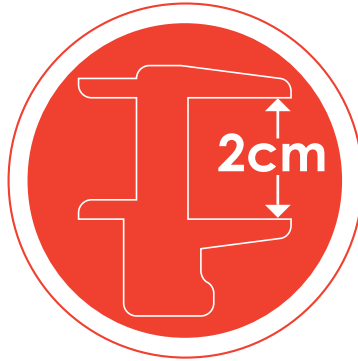


Inspired by nature, the 2-cm tile exhibits a marvelous blend of the finest stoneware materials, creating a well-structured porcelain tile that is lavished in different earthen colors and textures.

It conjures up an exceptional feeling of seriousness and precision due to its distinctive architectural characteristics. Thanks to the ethereal and artistic appearance, the 2-cm tile is the ultimate choice for projects.



# why



The 2 CM thick tiles guarantee high resistance to loads and stresses.it is the perfect choice for residential and commercial outdoor flooring .

The exceptional technical features of the 2cm tile are not affected by the passing of time. The 2cm tile can be fitted using one of the following methods:

- 1- Raised flooring with supports
- 2- Directly on top of gravel or soil without adhesives.
- 3- Traditional installation with adhesives.





Floor tile



Wall tile



Outdoor



Indoor



Easy to install



Non Slip



Can be reused



Load carrying



Thickness



warehouses



Factories



Resistant to  
thermal shock



Raised Floor



Frost & Fire Proof



No Adhesive

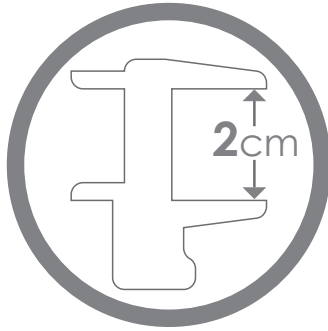


Anti Acide





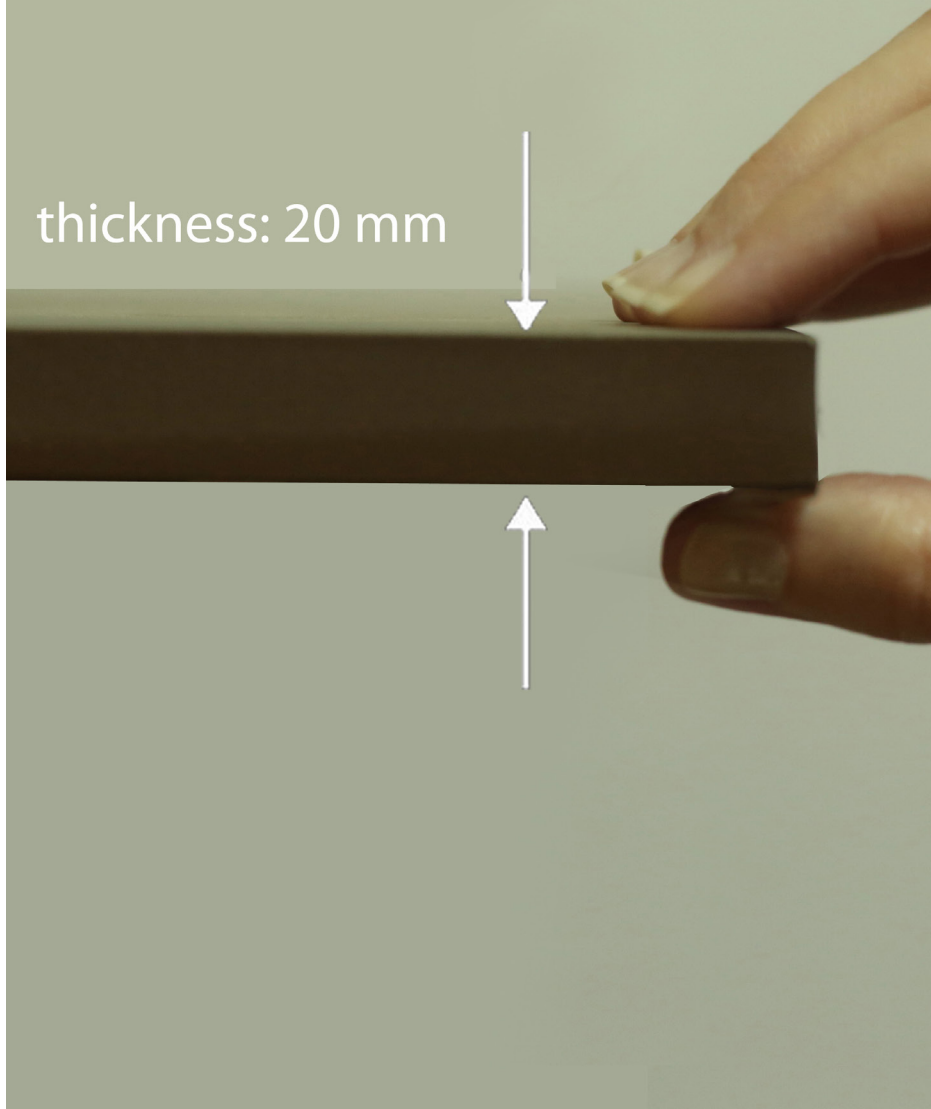


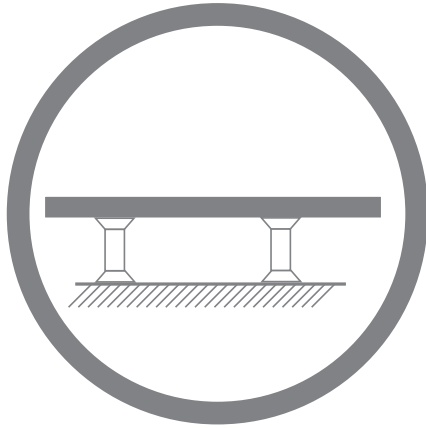


# Thickness

Because of its thickness,when suitably-  
installed, the 2 cm tile provides an  
approximate load bearing capacity of 1000  
kg/cm<sub>2</sub>.

thickness: 20 mm





## Rasied Floor

Compared to other types of ceramic and porcelain tiles, the 2-cm tile can be installed unglued on raised supports to allow for housing electrical cables and pipes underneath. this application allows easy replacement or repair of cables and pipes by simply lifting the 2 cm tile then lowering it after finishing the repair process without the need to break the tiles.





# Wall tile

The 2 cm tile can be mechanically installed (as described in the image) for wall applications. The 2 cm tile is ideal for facades of buildings since its exceptional technical features provide superior resistance to weather conditions, scratching, etc .





## No Adhesive

The 2-cm tile is a cost-efficient solution since installation doesn't necessarily require using grout substrates. It can be applied on gravel and soil surfaces, but when applied on a mortar base, the surface should be leveled off. prior to installation.





# Outdoor

The technical aspects of the 2-cm tile have widened the scope of usage of tiles to encompass a wide range of outdoor/indoor applications such as, gardens, hospitals, schools, airports, commercial offices, and restaurants, etc..





# Indoor

The technical aspects of the 2-cm tile have widened the scope of usage of tiles to encompass a wide range of outdoor/indoor applications such as, gardens, hospitals, schools , airports, commercial offices,and restaurants, etc..





## Load Carrying

The 2-cm thick tile enjoys a high level of weight-bearing capabilities and resistance to stress and heavy load objects. It is considered the best-fit tile for commercial applications.





# Non Slip

High level of safety is guaranteed since the 2-cm tile is slip-resistant especially when applied in areas that are more subject to frequent wetting.





# Anti Acid

Pertaining to its low porosity, high mechanical resistance, and associated chemical composition, the 2-cm tile stands against any possible chemical and acid contamination.



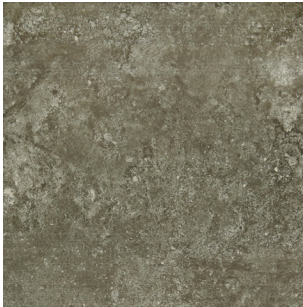
Tile size 40 cm x 40 cm & 60 cm x 60 cm



Mono Beige



Marga Beige



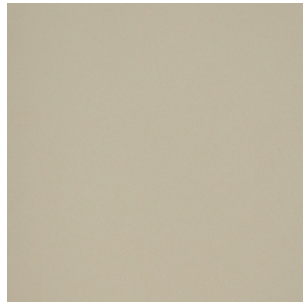
Marga Gray



Trendy Beige



Mono Gray



Mono Gray

tile size 40 cm x 40 cm & 60 cm x 60 cm



Stone Gray



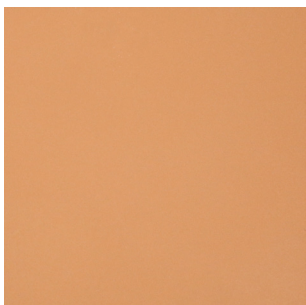
Stone Havan



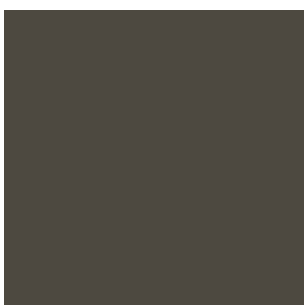
Stone Dark Gray



Stone Black



Mono Havan



Mono Dark Gray