

25x25 cm. 9.8x9.8 inches 13 mm



Ánfora Beige
6.130



Ánfora Tierra
6.130



Ánfora Cuero
6.130



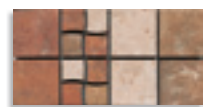
Tabica Ánfora Beige
16,5x25 aprox.
6.37



Tabica Ánfora Tierra
16,5x25 aprox.
6.37



Tabica Ánfora Cuero
16,5x25 aprox.
6.37



Composición Gres-121
12,5x25 aprox.
6.61

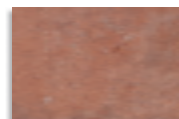


Cantonera Gres-121
12,5x12,5 aprox.
6.61

20x40 cm. 7.9x15.7 inches 13 mm



Ánfora Cuero
6.136



Tabica Ánfora Cuero
16,5x25 aprox.
6.37

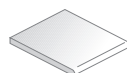
| Formato / Size | X Caja / Box | | | X Palet / Pallet | | |
|----------------|--------------|----------|-------|------------------|----------|------|
| | Pz / Pc | M2 / sqm | Kg | Cj / Box | M2 / sqm | Kg |
| 25x25 cm. | 16 | 1 | 28,65 | 45 | 45 | 1289 |
| 20x40 cm. | 13 | 1,04 | 29,36 | 48 | 49,92 | 1409 |

| Formato / Size | | X Caja / Box | | | X Palet / Pallet | | |
|----------------|---------|--------------|----|-------|------------------|-----|---------|
| | | Pz / Pc | ML | Kg | Cj / Box | ML | Kg |
| 9x25 cm. | rodapié | 40 | 10 | 17,50 | 81 | 810 | 1417,50 |
| 10x40 cm. | rodapié | 25 | 10 | 19,50 | 64 | 640 | 1248 |
| 25x33x2,3 cm. | peldaño | 4 | 1 | 15,03 | 58 | 58 | 872 |
| 16,5x25 cm. | tabica | 16 | 4 | 19,51 | - | - | - |
| 19x19 cm. | zanquín | 6 | - | 3 | - | - | - |
| 19x31,5 cm. | zanquín | 6 | - | 4,90 | - | - | - |
| 12,5x25 cm. | | 32 | 8 | 28 | - | - | - |
| 12,5x12,5 cm. | | 4 | - | 1,20 | - | - | - |

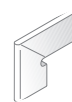
rodapié / skirting tile
10x40 cm. / 3.9x15.7 inches
Ánfora
6.28
rodapié / skirting tile
9x25 cm. / 3.5x9.8 inches
Ánfora
6.19



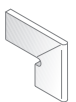
peldaño / staircase step
25x33x2,3 cm. / 9.8x13x0.9 inches
Ánfora
6.58



zanquín izquierdo
19x31,5 cm. aprox. / 7.5x7.5 inches
Ánfora
6.52
zanquín izquierdo
19x19 cm. aprox. / 7.5x7.5 inches
Ánfora
6.49



zanquín derecho
19x31,5 cm. aprox. / 7.5x12.4 inches
Ánfora
6.52
zanquín derecho
19x19 cm. aprox. / 7.5x7.5 inches
Ánfora
6.49



e-Ceramica

Contact us for wholesale prices or cooperation:

Zoran Milić

E-mail: info@e-ceramica.com

Mobile : + 386 41 684 696

Telephone : + 386 2 780 54 90

Fax : + 386 2 779 76 61

Merilly d.o.o. ; Vodnikova ulica 2 ; Si 2250 Ptuj ; Slovenia

Web :

• Americas

[Ceramic tiles in Argentina](#)
[Ceramic tiles in Bahamas](#)
[Ceramic tiles in Bolivia](#)
[Ceramic tiles in Canada](#)
[Ceramic tiles in Chile](#)
[Ceramic tiles in Colombia](#)
[Ceramic tiles in Costa Rica](#)
[Ceramic tiles in Cuba](#)
[Ceramic tiles in Ecuador](#)
[Ceramic tiles in El Salvador](#)
[Ceramic tiles in Guatemala](#)
[Ceramic tiles in Honduras](#)
[Ceramic tiles in Jamaica](#)
[Ceramic tiles in México](#)
[Ceramic tiles in Nicaragua](#)
[Ceramic tiles in Panamá](#)
[Ceramic tiles in Paraguay](#)
[Ceramic tiles in Perú](#)
[Ceramics in Re. Dominicana](#)
[Ceramics in Trin. & Tobago](#)
[Ceramic tiles in Uruguay](#)
[Ceramic tiles in USA](#)
[Ceramic tiles in Venezuela](#)

• Europe

[Ceramic tiles in BiH](#)
[Ceramic tiles in Crna Gora](#)
[Ceramic tiles in España](#)
[Ceramic tiles in France](#)
[Ceramic tiles in Germany](#)
[Ceramic tiles in Hrvatska](#)
[Ceramic tiles in Ireland](#)
[Ceramic tiles in Kosove](#)
[Ceramic tiles in Liechtenstein](#)
[Ceramic tiles in Magyarország](#)
[Ceramic tiles in Македонија](#)
[Ceramic tiles in Magedoni](#)
[Ceramic tiles in Malta](#)
[Ceramic tiles in Österreich](#)
[Ceramic tiles in Russia](#)
[Ceramic tiles in Schweiz](#)
[Ceramic tiles in Suisse](#)
[Ceramic tiles in Shqiperi](#)
[Ceramic tiles in Slovenija](#)
[Ceramic tiles in Србија](#)
[Ceramics in United Kingdom](#)

• Asia

[Ceramic tiles in India](#)
[Ceramic tiles in Pakistan](#)
[Ceramic tiles in Philippines](#)
[Ceramic tiles in Singapore](#)
[Ceramic tiles in Turkiye](#)

• Africa & Australia

[Ceramic tiles in Australia](#)
[Ceramic tiles in Cameroon](#)
[Ceramic tiles in Ghana](#)
[Ceramics in Guinea Ecuatorial](#)
[Ceramic tiles in Swaziland](#)
[Ceramic tiles in New Zealand](#)
[Ceramic tiles in Nigeria](#)