

15x15 cm. 6x6 inches

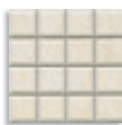


8 mm

ANTIQUA



Camelot Marfil  
G.145



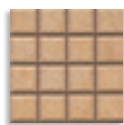
Grial Marfil  
G.156



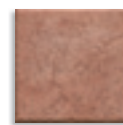
Merlín Marfil  
7,5x15 aprox.  
G.17



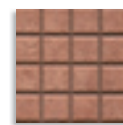
Camelot Ocre  
G.145



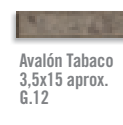
Grial Ocre  
G.156



Camelot Caldera  
G.145



Grial Caldera  
G.156



Avalón Tabaco  
3,5x15 aprox.  
G.12



Mandrágora Marfil  
3,5x15 aprox.  
G.17



Grial Marfil  
3,5x3,5 aprox.  
G.72



Perceval Marfil  
7,5x7,5 aprox.  
G.12



Mandrágora Ocre  
3,5x15 aprox.  
G.17



Grial Ocre  
3,5x3,5 aprox.  
G.72



Mandrágora Caldera  
3,5x15 aprox.  
G.17



Grial Caldera  
3,5x3,5 aprox.  
G.72



Grial Tabaco  
3,5x3,5 aprox.  
G.72



Tristán 3,5x15  
G.33  
Angulo Tristán  
3,5x3,5 aprox.  
G.47



1/2 Caña Cincha 2x15  
G.33  
Angulo 1/2 Caña  
Cincha 2x1,6 aprox.  
G.43



Composición Dama  
Ocre  
7,5x15 aprox.  
G.37



Composición Dama  
Caldera  
7,5x15 aprox.  
G.37



Composición Dama  
Tabaco  
7,5x15 aprox.  
G.37



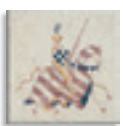
Lancelot  
7,5x15 aprox.  
G.32



Cenefa Armadura  
G.40



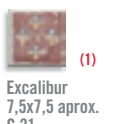
Arturo-4  
G.36



Bendivere-4  
G.36



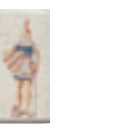
Torneo 3,5x15 aprox.  
G.23



Excalibur  
7,5x7,5 aprox.  
G.21



Ginebra-4  
15x7,5 aprox.  
G.32



Gesta  
3,5x3,5 aprox.  
G.12



Tintagel  
7,5x7,5 aprox.  
G.21



Cenefa Camlan  
G.36



Mordred-4  
G.36



Isolda 7,5x15  
G.52



Morgana-4  
G.56



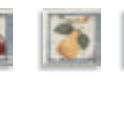
Kay 7,5x15 aprox.  
G.32



Arimatea  
7,5x7,5 aprox.  
G.21



Hechizo-4  
7,5x7,5 aprox.  
G.21



Gawain-2  
7,5x15 aprox.  
G.32



Uther-4  
15x7,5 aprox.  
G.32



X Caja / Box

X Palet / Pallet

| Formato / Size                             | X Caja / Box |          |       | X Palet / Pallet |          |      |
|--|--------------|----------|-------|------------------|----------|------|
|  | Pz / Pc      | M2 / sqm | Kg    | Cj / Box         | M2 / sqm | Kg   |
| 15x15 cm.                                  | 44           | 1        | 17,68 | 75               | 75       | 1326 |
| 15x15 cm. <small>pieza y cantonera</small> | 4            | 0,09     | 2     | -                | -        | -    |
| 7,5x7,5 cm.                                | 100          | 0,50     | 10    | -                | -        | -    |
| 3,5x3,5 cm.                                | 100          | 0,10     | 2,40  | -                | -        | -    |

X Caja / Box

X Palet / Pallet

| Formato / Size | cenefa                | X Caja / Box |      |      | X Palet / Pallet |    |    |
|----------------|-----------------------|--------------|------|------|------------------|----|----|
|                |                       | Pz / Pc      | ML   | Kg   | Cj / Box         | ML | Kg |
| 15x15 cm.      | cenefa                | 16           | 2,40 | 7    | -                | -  | -  |
| 2x15 cm.       |                       | 40           | 6    | 2,75 | -                | -  | -  |
| 3,5x15 cm.     |                       | 40           | 6    | 4    | -                | -  | -  |
| 7,5x15 cm.     | Isolda                | 50           | 7,50 | 7    | -                | -  | -  |
| 7,5x15 cm.     | listelo y composición | 50           | 7,50 | 10   | -                | -  | -  |
| 15x7,5 cm.     |                       | 50           | 3,75 | 10   | -                | -  | -  |

(1) Este modelo está compuesto por diseños diferentes para combinar de modo alterno, se sirven en la misma caja. This model has different designs that are combined alternately, coming in the same box.

(2) Este modelo está compuesto por 2 diseños diferentes para combinar de modo alterno, se sirven en la misma caja. This model has 2 different designs that are combined alternately, coming in the same box.

Arturo-4, Mordred-4, Morgana-4 y Bendivere-4 ... 4 piezas por caja. Arturo-4, Mordred-4, Morgana-4 and Bendivere-4 ... 4 pieces per box.

## e-Ceramica

Contact us for wholesale prices or cooperation:

Zoran Milić

E-mail: [info@e-ceramica.com](mailto:info@e-ceramica.com)

Mobile : + 386 41 684 696

Telephone : + 386 2 780 54 90

Fax : + 386 2 779 76 61

*Merilly d.o.o. ; Vodnikova ulica 2 ; Si 2250 Ptuj ; Slovenia*

Web :

### • Americas

[Ceramic tiles in Argentina](#)  
[Ceramic tiles in Bahamas](#)  
[Ceramic tiles in Bolivia](#)  
[Ceramic tiles in Canada](#)  
[Ceramic tiles in Chile](#)  
[Ceramic tiles in Colombia](#)  
[Ceramic tiles in Costa Rica](#)  
[Ceramic tiles in Cuba](#)  
[Ceramic tiles in Ecuador](#)  
[Ceramic tiles in El Salvador](#)  
[Ceramic tiles in Guatemala](#)  
[Ceramic tiles in Honduras](#)  
[Ceramic tiles in Jamaica](#)  
[Ceramic tiles in México](#)  
[Ceramic tiles in Nicaragua](#)  
[Ceramic tiles in Panamá](#)  
[Ceramic tiles in Paraguay](#)  
[Ceramic tiles in Perú](#)  
[Ceramics in Re. Dominicana](#)  
[Ceramics in Trin. & Tobago](#)  
[Ceramic tiles in Uruguay](#)  
[Ceramic tiles in USA](#)  
[Ceramic tiles in Venezuela](#)

### • Europe

[Ceramic tiles in BiH](#)  
[Ceramic tiles in Crna Gora](#)  
[Ceramic tiles in España](#)  
[Ceramic tiles in France](#)  
[Ceramic tiles in Germany](#)  
[Ceramic tiles in Hrvatska](#)  
[Ceramic tiles in Ireland](#)  
[Ceramic tiles in Kosove](#)  
[Ceramic tiles in Liechtenstein](#)  
[Ceramic tiles in Magyarország](#)  
[Ceramic tiles in Македонија](#)  
[Ceramic tiles in Magedoni](#)  
[Ceramic tiles in Malta](#)  
[Ceramic tiles in Österreich](#)  
[Ceramic tiles in Russia](#)  
[Ceramic tiles in Schweiz](#)  
[Ceramic tiles in Suisse](#)  
[Ceramic tiles in Shqiperi](#)  
[Ceramic tiles in Slovenija](#)  
[Ceramic tiles in Србија](#)  
[Ceramics in United Kingdom](#)

### • Asia

[Ceramic tiles in India](#)  
[Ceramic tiles in Pakistan](#)  
[Ceramic tiles in Philippines](#)  
[Ceramic tiles in Singapore](#)  
[Ceramic tiles in Turkiye](#)

### • Africa & Australia

[Ceramic tiles in Australia](#)  
[Ceramic tiles in Cameroon](#)  
[Ceramic tiles in Ghana](#)  
[Ceramics in Guinea Ecuatorial](#)  
[Ceramic tiles in Swaziland](#)  
[Ceramic tiles in New Zealand](#)  
[Ceramic tiles in Nigeria](#)